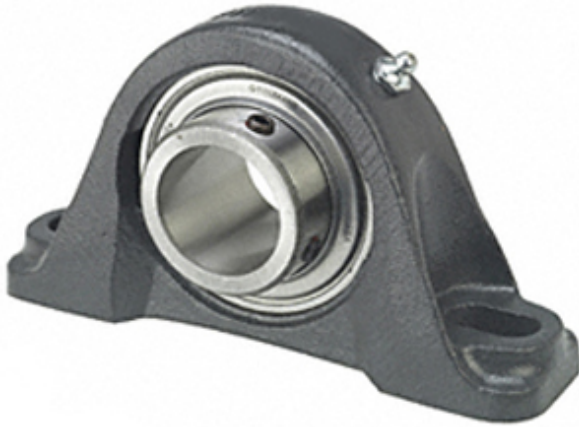




Anhui Xiaoyi Bearing Import & Export ...

0.5 Inch | 12.7 Millimeter x 1.078 Inch | 27.381
 Millimeter x 1.188 Inch | 30.175 Millimeter
 TIMKEN YAS 1/2 Pillow Block Bearings



Bearing No. YAS 1/2

YAS 1/2 Bearing 2D drawings and 3D CAD models

Category	Pillow Block Bearings
Inventory	0.0
Manufacturer Name	TIMKEN
Minimum Buy Quantity	N/A
Weight	0.48
EAN	0087796157644
Product Group	M06110
Number of Mounting Holes	2
Mounting Method	Set Screw
Housing Style	2 Bolt Pillow Block
Rolling Element	Ball Bearing
Housing Material	Cast Iron
Expansion / Non-expansion	Non-expansion
Mounting Bolts	3/8 Inch
Relubricatable	Yes
Insert Part Number	GY1008KRRB
Seals	Double Land Riding Rubber Contact
Housing Configuration	1 Piece Solid
Inch - Metric	Inch
Other Features	Single Row Spherical Normal Duty High Base
Long Description	2 Bolt Pillow Block; 1/2" Bore; 1-3/16" Base to Center Height; Set Screw Mount; Ball Bearing; 2-3/4"



Anhui Xiaoyi Bearing Import & Export ...

	Minimum Bolt Spacing; 4-1/2" Bolt Spacing Maximum; Relubricatable; Cast Iron; D
Category	Pillow Block
UNSPSC	31171511
Harmonized Tariff Code	8483.20.40.40
Noun	Bearing
Keyword String	Pillow Block
Manufacturer URL	http://www.timken.com
Manufacturer Item Number	YAS 1/2
Weight / LBS	1.05
d	0.5 Inch 12.7 Millimeter
Bolt Spacing Minimum	2.75 Inch 69.85Millimeter
Bolt Spacing Maximum	4.5 Inch 114.3Millimeter
D	1.078 Inch 27.381 Millimeter
Nominal Bolt Center to Center	3.6 Inch 92 Millimeter
Actual Bolt Center to Center	0 Inch 0Millimeter
B	1.188 Inch 30.175 Millimeter